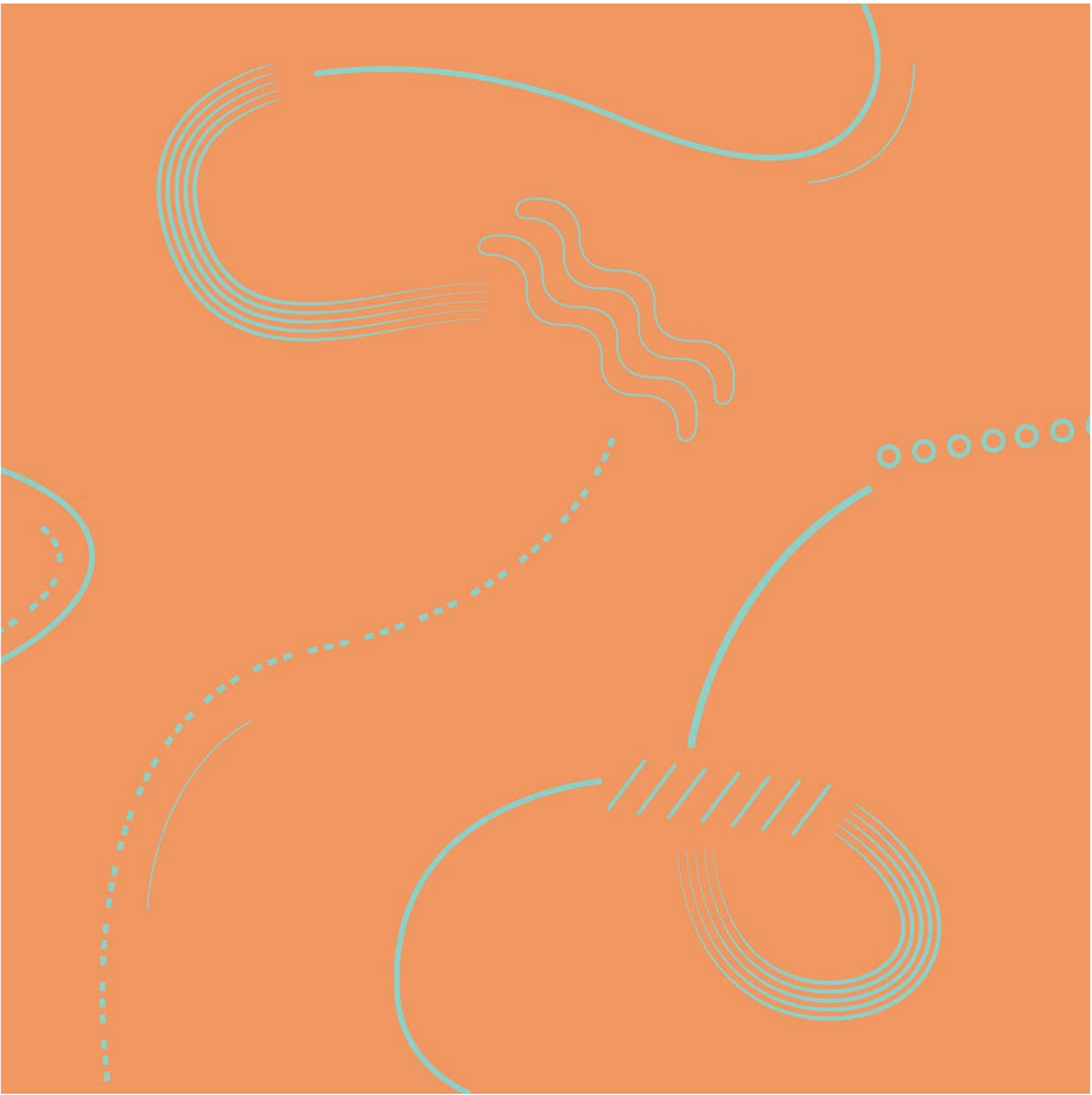




PRESENTS

ART FROM WITHIN

LET YOUR
JOURNEY
BEGIN WITH
THE TURN OF THE PAGE...



CONTENTS

LEVEL 1

Yeo Chee Keong, Sun Yu Li,
Chua Boon Kee, Ng Yak Whee

LEVEL 7

Eric Chan

LEVEL 9

Lai Kui Fang, Lim Soo Ngee,
Chang Wei

LEVEL 10

Terence Teo

YEO CHEE KIONG

LVL 1

Triumph

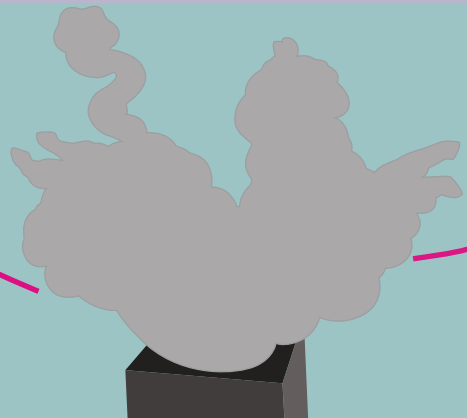


What does the sculpture look like to you?

ABOUT THE ARTWORK

It is meant to resemble a horse. These animals are often regarded as symbols of honour, respect and endurance. In this sculpture, the artist pays tribute to these majestic animals in full splendour.

Look at the sculpture. What do you think it is made of?



Ballet



What does the sculpture remind you of?

ACTIVITY TIME!

Try your best to mimic the posture of this sculpture. Take turns with your friends and decide who did it best !

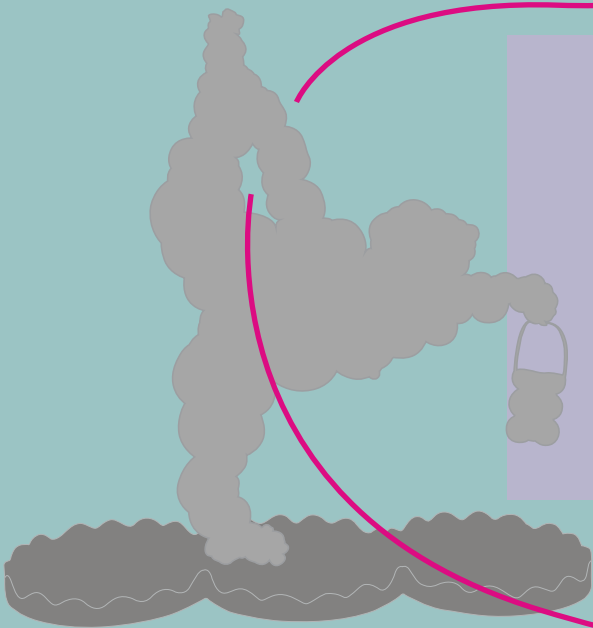
Shopping



What do you think this figure is doing?

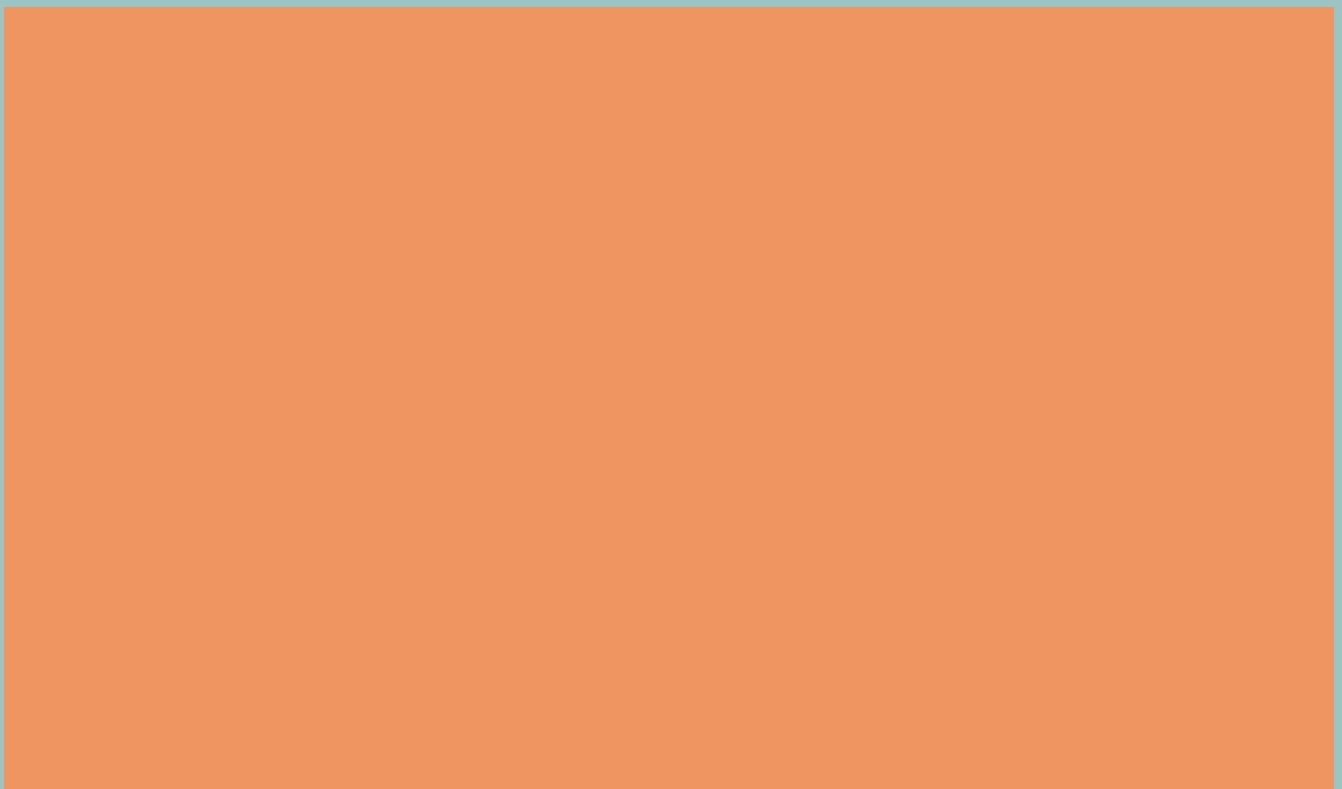
ABOUT THE ARTWORK

We are often attracted to shiny glossy products with perfect finishes. The artist, Yeo Chee Kiong created this 'seemingly lightweight' sculpture to poke fun at our obsession with consumerism today. "Shopping" was created in 2014 and is made of stainless steel.



ACTIVITY TIME!

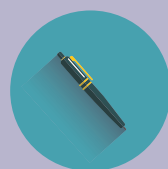
Use circles to draw a figure in action. You can use your own circular stickers. Have Fun!



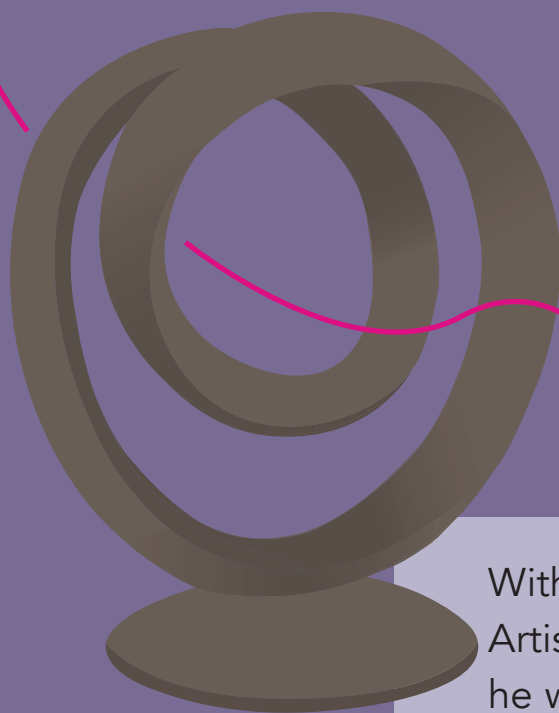
SUN YU LI

LVL 1

Globetrotter



What words would you use to describe this sculpture?



With so much jet-setting around the world, local Artist Yu Li created this semi-abstract sculpture as he wanted to express the dynamism and constant movement of daily life.

06

CHUA BOON KEE

LVL 1

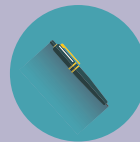
Taichi

Trace the outline of this artwork very slowly by using your arms. How do you feel after doing this?

ACTIVITY TIME!

FUN FACT:

Taichi is a form of exercise that consists of slow, rhythmic circular movements.



Think about a type of exercise. (eg. cycling) How would you express this motion like how Chua expressed Taichi?

NG YAK WHEE

LVL 1

Song Of The Corals

ABOUT THE ARTWORK

Ng uses dynamic forms and subtly layered colours and loose brushwork to express a fantasy. He conveys the fluidity of water and musical rhythm, therefore creating an ethereal quality in his work.



What does this painting look like?
What do you think was the source of inspiration for this painting?

Two Trees In The Woods

FUN FACT:

Ng won the First Prize in the UOB Painting of the Year Competition in 1992.

Ng often draws inspiration from nature, eg. birds, trees, and landscapes. This painting draws away from his usual abstract works. Here, Ng captures the roughness of the bark and tangle of interlocked roots.

ABOUT THE ARTWORK



How is this different from the first painting?
Can you see anything else in the painting other than the 2 trees?

S R I Q O A T L A I Y W P N K D H
 M E P H E N L O C A L F A F S R R U
 O A E N V C J I E O P G I V S E U
 V T B Y C X M W I O O H N S P T S
 E R D S T H S E O B A R T W O R K
 M E R U T P L U C S G B I E N C O
 E N S Y K R O O N E U I N R T C L
 N O H I L U A D T P I N G L A I P
 T R M O D E S C L O D W D I N J P
 S X Q W U B V V T W F K R E E T I
 O I K C K E H I A I O L S E O E D
 P T S G M D E N L N R Z A N U Q M
 D J V A U F R J U A V U B J S P K

ACTIVITY TIME!

Can you find all of these in the word search above?

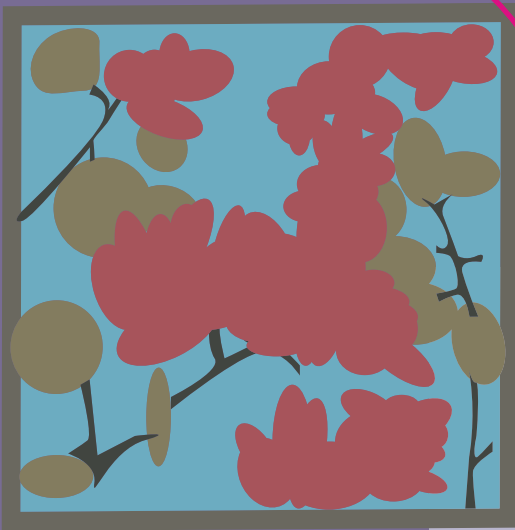
MOVEMENTS
 LOCAL
 ABSTRACT
 RHYTHMIC
 PAINTING

SPONTANEOUS
 ARTWORK
 LIVELY
 SCULPTURE

ERIC CHAN

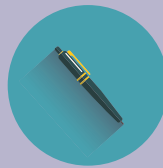
LVL 7

Bougainvillea In Crimson



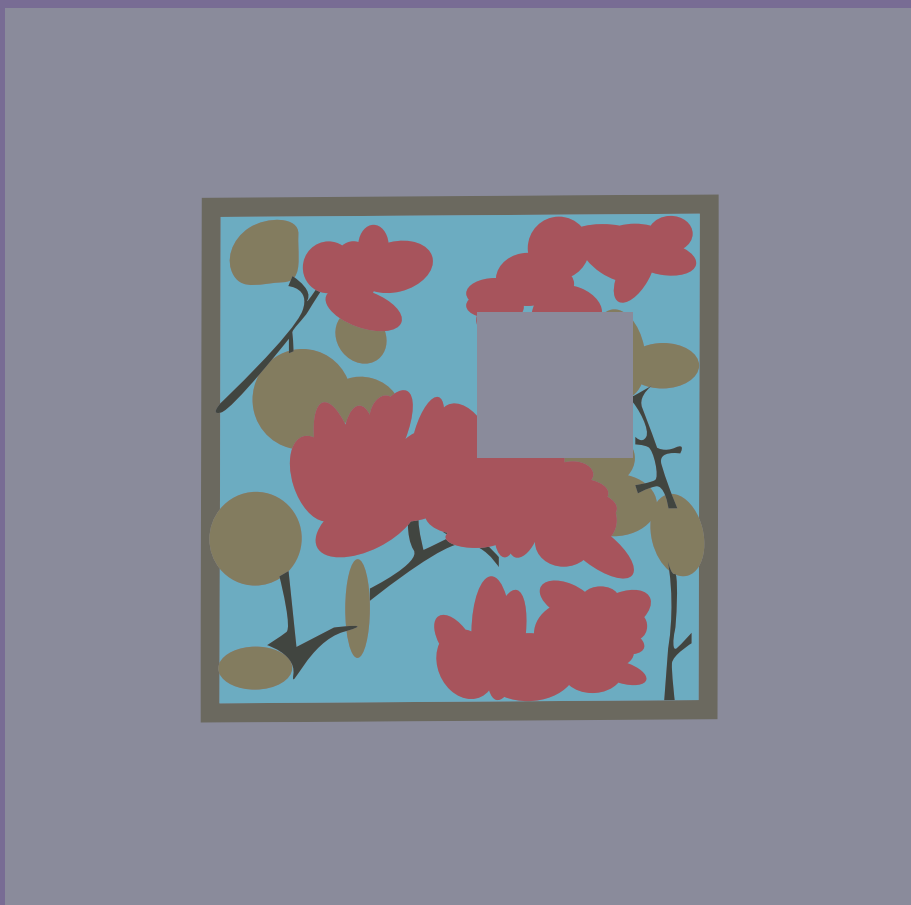
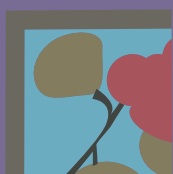
FUN FACT:

Chan's training in photography sharpened his skills in capturing fine details of the subject.



Give some words to describe the painting. Is it clear or blurry? What made you think so?

Circle the missing piece!



**ACTIVITY
TIME!**

*Cut it out to
check if you
are right!*

LAI KUI FANG

LVL 9

ABOUT THE ARTWORK

This painting is a depiction of a typical sight in 1980s Singapore, when it was filled with boats that piled the river for commerce and leisure. It illustrates Singapore at the cusp of its development.

Singapore River Boat South Quay

FUN FACT:

This painting was created in a 'Realist' style - popular in the 18th to 19th century art.

ACTIVITY TIME!

In the space below,
draw 2 objects -
one that represents
'Old Singapore'
and another
representing
'Singapore Today'.



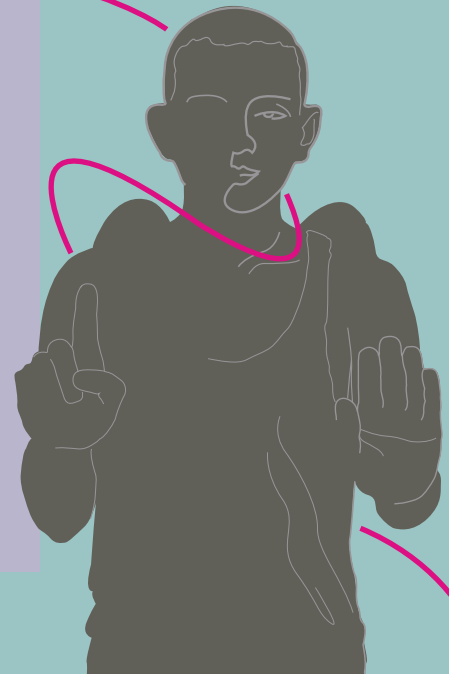
LIM SOO NGEE

LVL 9

Indicator



Why do you think the figure has wings? What could be the meaning behind his hand gestures? What gesture would you use in response to this figure?



ABOUT THE ARTWORK

Created in 2015, 'indicator' is made of bronze and measures 1.6m x 0.48m x 0.7m. Lim used a life-size winged man to remind us of humanity's intrinsic kindness through common gestures.

CHANG WEI

LVL 9

Merry Making



Observe the expression of the figure. Do you think she looks as 'merry' as the title stated? What do you think she is saying over the phone?

ABOUT THE ARTWORK

Technology advancements have changed the way we interact with one another. Chang created this work to highlight the impact of such devices in our lives today.

Gaze



Look closely in the eyes of the sculpture. What kind of emotion do you think the figure is feeling? What makes you say that?



ACTIVITY TIME!

Try to imitate the expression of the figure.
What do you look like to others?
In pairs, try staring at each other's eyes for about 3 minutes. How did it feel like to look at others and be looked upon constantly?
Share this experience with your friends.

TERENCE TEO

LVL 10

Singular Beauty

ABOUT THE ARTWORK

Teo's artwork is distinguished by its lively, spontaneous brushstrokes, a delicately restrained use of colour and also a finely tuned sensitivity to the qualities of ink.



What do you feel when you look at this painting?
What makes you say that?
What do you think the artist felt as he was creating the brushstrokes?

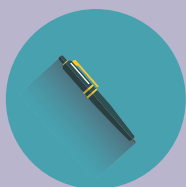
FUN FACT:

This work forms a part of the his series, The Romance in Shangri-La, and reveals the depth of Teo's captivation with the beautiful landscape of Shangri-La.

ACTIVITY TIME!

Using whatever stationery you have at hand, create your own version of Teo's 'Singular Beauty'. Think about the emotion you'd want to evoke from your own work.

CROSSWORD PUZZLE



Complete the crossword on the next page!
The questions you need to answer are in
the space below.

Down:

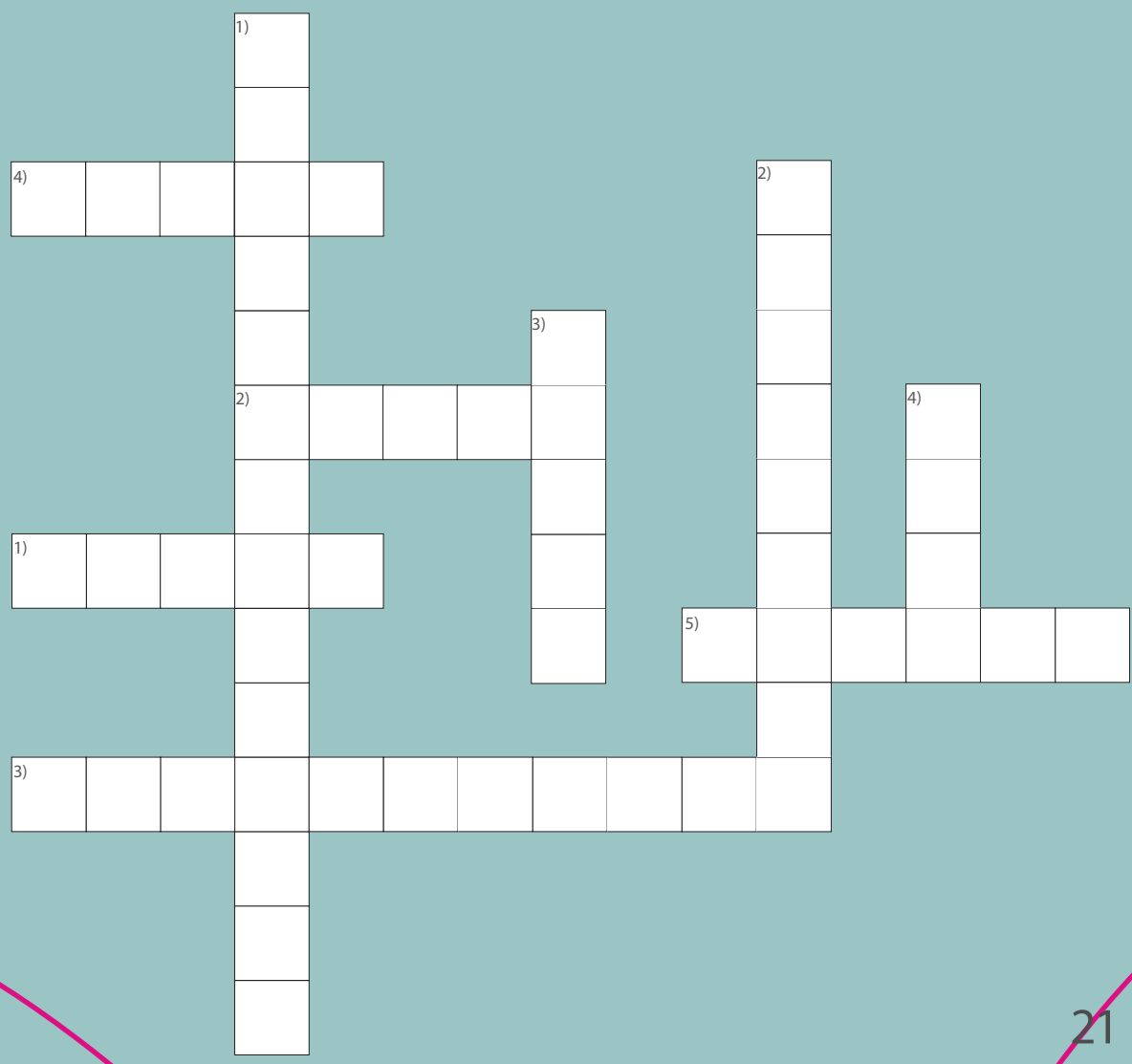
- 1) Yeo Chee Keong's works are made of _____.
- 2) 'Singapore Boat Quay' is a depiction of SG on the brink of _____.
- 3) What medium did Chang Wei use for 'Merry-Making'?
- 4) How many artworks were created in the 2000s decade?

Across:

- 1) 'Triumph' is meant to resemble a _____.
- 2) Ng Yak Whee uses _____ brushwork in his paintings to express a fantasy.
- 3) Eric Chan's skills in _____ led him to capture fine details in his work.
- 4) The works featured in this guidebook are made by _____ artists.
- 5) 'Singular Beauty' is characterized by _____ brush-strokes.

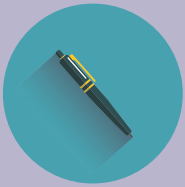
Down:
 1) stainless steel
 2) modernity
 3) resin
 4) nine

Across:
 1) horse
 2) loose
 3) photography
 4) local
 5) lively



REFLECTION

LOG



3 Things I Learnt Today
2 Things I Want to Find Out
1 Question I Have in Mind
(About an Artist)

Acknowledgements

ORGANISATIONS
& INSTITUTIONS

Presented By



Designed By

NAFA
NANYANG ACADEMY OF FINE ARTS

DESIGNER,
PHOTOGRAPHER
& WRITER

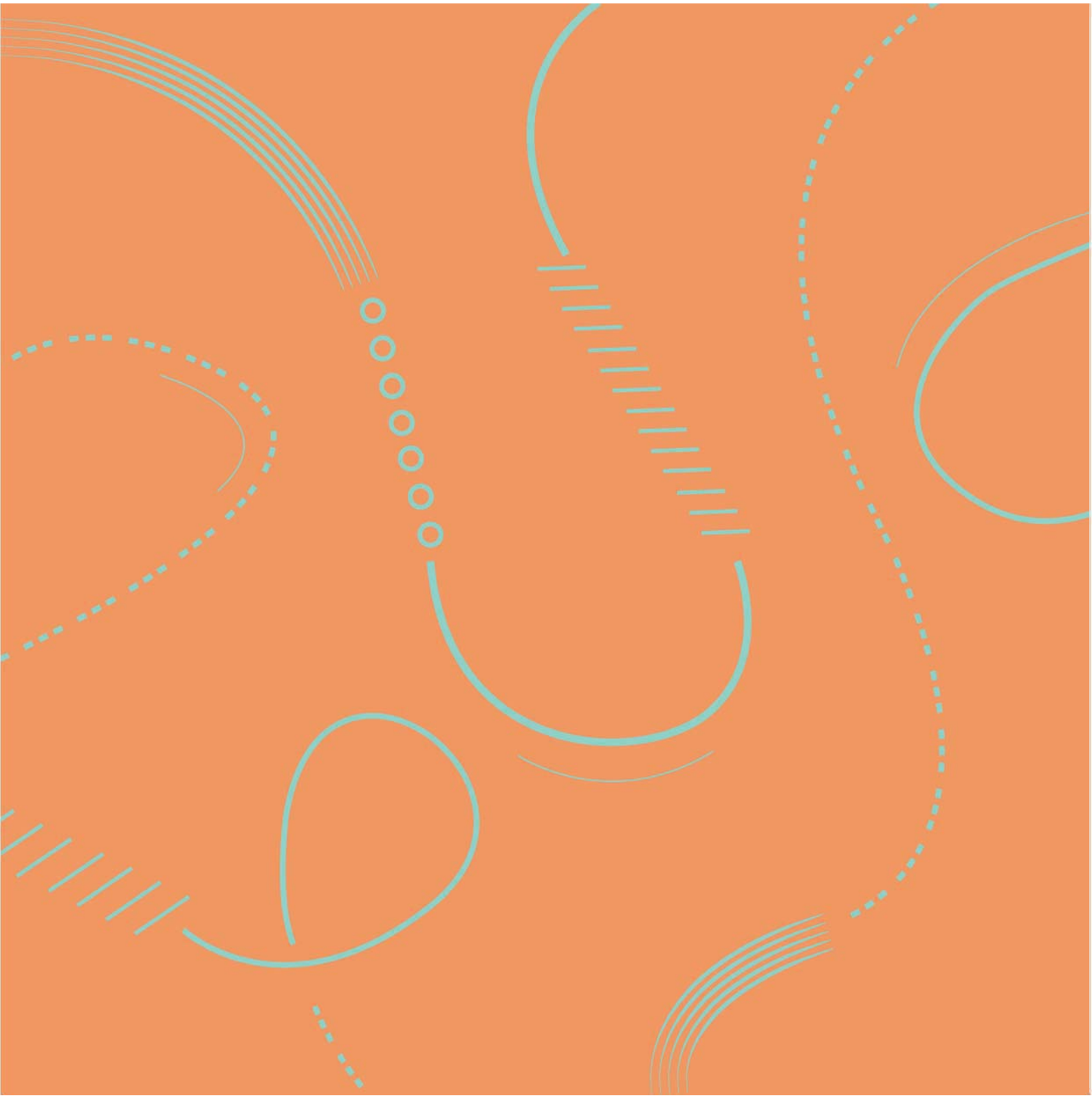
Siti Nursyazana

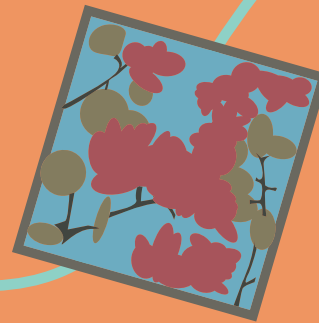
© 2019 Singapore Chinese Cultural Centre
No part of this resource may be reproduced without prior
permission from the Singapore Chinese Cultural Centre.

FINAL RESPONSE



If you could tell a story with using your own artwork, what story would you come up with?
What would your artwork look like?
Make a sketch of it on the next page and do a short write-up about your story in the space below.





YOU'VE REACHED THE
END OF THIS GUIDE,
HOPE YOU HAD A GREAT
TIME AT SINGAPORE
CHINESE CULTURAL CENTRE

THE END.



SingaporeChineseCulturalCentre



SingaporeCCC



sccc_sg



www.singaporeccc.org.sg